

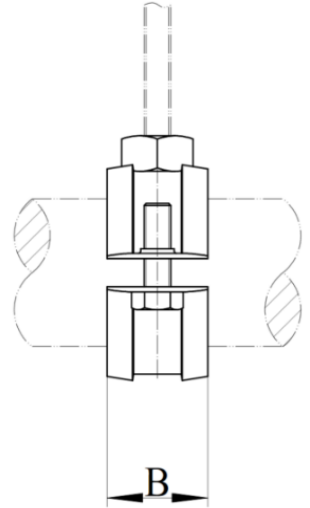
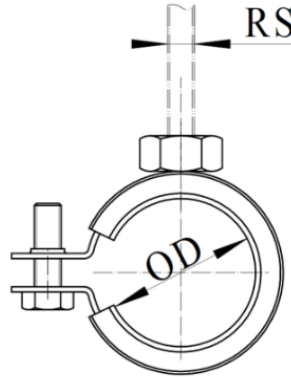
**A-454****Zinc****SUPERFIX STANDARD DUTY**

**FUNCTION:** Designed to prevent vibration, noise, and metal to metal contact. Versatile, cost effective hinged style EPDM rubber lined clamp. Features easy closing design for steel pipes and copper tubes. Unique hinged design eliminates the need to disassemble the clamp prior to installation. Clamp can be closed with one hand. Design of the closing mechanism retains strength even when exposed to heat. Category II noise reduction according to DIN EM ISO 3822-1. Compliant for sound insulation design according to DIN 4109.

**APPROVALS:** Complies with Manufactures' Standardization Society (MSS) SP-58 & SP-69 (Type 12).

**MATERIAL:** Steel and EPDM Rubber Liner

**FINISH:** Zinc Electro-Galvanized



Pipe Size	Copper Tube Size	Specification Data			Rec. Max. Load (lbs.)
		OD	RS	B	
1/4	3/8	0.472 - 0.551	3/8	29/32	180
3/8	1/2	0.591 - 0.748	3/8	29/32	180
-	5/8	0.750 - 0.828	3/8	29/32	180
1/2	3/4	0.827 - 0.906	3/8	29/32	180
3/4	1	1.024 - 1.102	3/8	29/32	180
1	1 1/4	1.260 - 1.378	3/8	29/32	180
1 1/4	1 1/2	1.575 - 1.693	3/8	29/32	180
1 1/2	-	1.890 - 2.047	3/8	29/32	180
-	2	2.125 - 2.283	3/8	15/16	180
2	-	2.244 - 2.402	3/8	29/32	180
-	2 1/2	2.480 - 2.638	3/8	29/32	300
2 1/2	-	2.744 - 2.874	3/8	15/16	300
-	3	2.906 - 3.156	3/8	15/16	300
3	-	3.268 - 3.583	3/8	15/16	300
-	3 1/2	3.625 - 3.937	3/8	29/32	300
3 1/2	4	3.976 - 4.173	3/8	1 1/8	300
4	-	4.252 - 4.488	3/8	1 1/8	300

This specification sheet is for reference only. Aimco International Group Corp. reserves the right to make changes to the design without prior notice.